



Automotive Aftermarket

Quarterly Dashboard

Market Intelligence for Industry Players

Q1 2008

First Quarter 2008 M&A Commentary

Recent turmoil in the credit markets and sluggish economic activity have resulted in a sharp fall in world-wide transaction volume, which fell to its lowest level since the third quarter of 2005 and declined 24% on a year-over-year basis, according to Dealogic. The U.S. market took the biggest hit, falling 41% to \$203.9 billion in transaction value, the lowest total since the fourth quarter of 2004. Despite a significant drop in global merger and acquisition activity, 86 deals were completed in the auto aftermarket industry in the first quarter -- 9% more than the same period last year.

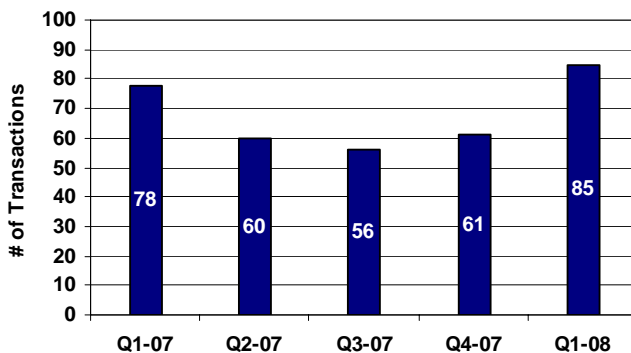
Although fewer private equity deals seem to be happening in the auto aftermarket industry at this time, strategic buyers have stepped into the void and more than made up the difference. Total auto aftermarket transaction volume in the first quarter was up 39% over the fourth quarter of 2007.

Selected First Quarter Deal Briefs

FleetPride acquires Oklahoma Truck Supply and Truck & Industrial Supply Company. FleetPride, already the nation's largest independent distributor of heavy-duty truck and trailer parts, made two sizable acquisitions in the first quarter of this year. In February, FleetPride acquired Oklahoma Truck Supply to fill out the company's footprint in its central region and to better enable it to service its customer in that region. Todd Dunn, President and CEO of FleetPride stated, "We are now strategically positioned to quickly service our national accounts as well as our existing customers across Oklahoma and Arkansas. The Tulsa acquisition is an important element in our external growth strategy." In March, FleetPride gained its first presence in the state of Wyoming with the acquisition of three Truck & Industrial Supply locations in the state. FleetPride was lured to Wyoming by its booming energy sector. "Historically, FleetPride has performed well in locations where the local economy is driven by the natural gas, oil, or coal industries," said Dunn.

FleetPride is owned by Investcorp, an institutional investment advisory firm that has transacted investments worth approximately \$38 billion. Investcorp also owns American Tire Distributors, a leading national distributor of tires to the replacement market in the U.S., and held prior investments in Jiffy Lube and CSK Auto.

Automotive Aftermarket
Deal Volume by Quarter



Source: Capital IQ and Capstone Partners

Continued on Page 2...



Capstone Partners LLC | One Boston Place, 39th Floor, Boston, MA 02108

Phone: 617-619-3300 | Fax: 617-619-3301 | www.capstonellc.com

Automotive Aftermarket

Quarterly Dashboard



CAPSTONE PARTNERS LLC

One Boston Place
39th Floor
Boston, MA 02108

www.capstonellc.com

AUTOMOTIVE AFTERMARKET TEAM

Kevin Jolley
Managing Director
617.619.3330

kjolley@capstonellc.com

Jonathan Taylor
Vice President
617.619.3309

jtaylor@capstonellc.com

Justin Ross
Analyst

617.619.3310

jross@capstonellc.com

Selected First Quarter Deal Briefs (continued)

Superior Capital Partners acquires OEM Components, USA Switch, and Rostra Precision Controls.

Superior Capital is a newly formed Detroit-based private equity investment fund dedicated to the acquisition of companies in need of capital and operational improvement. The fund partnered with Thomas P. Petrillo to form Aftermarket Controls Holding Corp. to acquire Wixon, Michigan-based OEM Components and USA Switch, and Laurinburg, North Carolina-based Rostra Precision Controls. OEM Components and USA Switch are value added distributors of electronic transmission and engine management components including solenoids, sensors, switches, and wire harnesses to the automotive aftermarket. Rostra is a manufacturer and distributor of electronic transmission components and wire harnesses. "These companies fit squarely in Superior's investment criteria and together represent a compelling combination of assets with defensible market positions that target growing segments in the auto aftermarket," said Mark Carroll, Superior Capital's Managing Partner.

Robert Bosch acquires Accu Industries and Shenzhen Wei Ning Da Co.

The acquisition of Accu Industries provides Bosch with attractive product additions and a nationwide sales and service organization to complement Bosch's wheel service portfolio. This acquisition will strengthen its operations and position Bosch's North American Diagnostics division for long term growth and profitability. Accu Industries sells tire changers, wheel balancers, and wheel alignment equipment. The company employs 45 associates and generated \$16 million in sales in 2007.

Shenzhen manufacturers diagnostic equipment and related software and is expected to increase Bosch's sales of diagnostic equipment to China, a market with tremendous growth potential.

O'Reilly Automotive, Inc. acquires CSK Auto Corporation.

O'Reilly acquired CSK in a transaction valued at approximately \$1 billion, including the assumption of \$500 million in debt. The combination creates the third largest auto parts retailer in the U.S. with approximately 3,200 stores and \$4.4 billion in sales.

The acquisition gives O'Reilly's a strong presence in the Western U.S. – something the company did not have before as it previously kept exclusively within its Midwestern and Southeastern footprint. O'Reilly anticipates the transaction will be modestly accretive to earnings per share in fiscal year 2009 and cost savings are expected to total approximately \$100 million annually beginning in fiscal year 2010. Also, O'Reilly expects to strengthen CSK's existing operations by executing its proven dual market strategy of providing exceptional service to both DIY customer and professional installers and implementing its industry-leading distribution and inventory management systems.

First Quarter Automotive Aftermarket M&A Transactions

Announced / Closed	Target / Acquirer	Target Description	Implied EV (\$mm)	EV/LTM	
				Revenue	EBITDA
3/31/2008	Berco Produktion AB STRICT Equity AB	Manufactures and sells covers for trucks, trailers, semi-trailers, and swap bodies.	\$ 5.5	0.4x	-
3/31/2008	OEM Components, Inc. Superior Capital Partners L.L.C.	Distributes electronic transmission and engine-management components for automotive aftermarket.	-	-	-
3/28/2008	Weicon Pending Bosch	Manufacturer of diagnostic equipment.	-	-	-
3/28/2008	Rostra Precision Controls, Inc. Superior Capital Partners L.L.C.	Manufactures OEM and transmission products for the automotive aftermarket.	-	-	-
3/27/2008	Moscow Tyre Plant-M 3/27/2008 Midland Resources Holding Ltd.	Manufactures tires.	-	-	-
3/27/2008	Tiden Associates Inc. (OTCPK:TLDN) Pending Extreme Mobile Coating	Provides administration and support for full service automotive repair centers.	-	-	-
3/25/2008	China Enterprises Ltd. (OTCPK:CSHE.F) Pending Undisclosed	Manufactures tires in Hong Kong.	\$ 106.5	-	-
3/24/2008	Edaran Otomobil Nasional Bhd (KLSE:EON) 3/24/2008 HICOM Holdings Berhad	Sells motor vehicles and related spare parts and services vehicles.	\$ 69.6	0.1x	3.0x
3/21/2008	C&C Tech Co., Ltd. 3/21/2008 Sehwa Co. (KOSE:A009010)	Manufactures car audio, car AV, navigation, multimedia, and car electronics products.	\$ 9.3	-	-
3/19/2008	Racing Sports Akimoto and DUB-Air Pending Pilot Automotive	Manufactures sport compact products and accessories.	-	-	-
3/19/2008	HR Owen plc (LSE:HRO) Pending Bentley Motors Ltd	Sells new and used cars of various brands; and engages in servicing of vehicles, sale of parts, and bodyshop repairs.	-	-	-
3/17/2008	Truck & Industrial Supply Co, Inc., Certain Assets 3/17/2008 Fleetpride, Inc.	Engages in the distribution of heavy-duty truck and trailer parts.	-	-	-
3/14/2008	Perfection Equipment Inc. 3/14/2008 VIPAR Heavy Duty Inc.	Manufactures automotive parts and accessories.	-	-	-
3/13/2008	AAA Radiator Warehouse 3/13/2008 Radiator Express Warehouse	Engages in the wholesale of aftermarket automotive cooling parts.	-	-	-
3/12/2008	Tri-US Auto Radiator Works Inc. 3/12/2008 Radiator Express Warehouse	Engages in the sale and distribution of auto car radiators.	-	-	-
3/12/2008	Cargo Van 3/12/2008 The European Van Company	Manufactures truck equipment and truck kits.	-	-	-
3/12/2008	Accu Industries, Inc. 4/1/2008 Robert Bosch GMBH	Manufactures wheel service equipment.	-	-	-
3/12/2008	Olathe Ford Lincoln Mercury 3/12/2008 Olathe Ford	Sells new and pre owned vehicles and provides parts, accessories, and services for vehicles.	-	-	-
3/11/2008	Pirelli Tyre S.p.A. 3/11/2008 Pirelli & C. SpA (CM:PC)	Engages in the design, development, production, and marketing of tires.	\$1,713.4	0.3x	2.0x
3/11/2008	Hickley Valtone, Refinish Division 3/11/2008 Hex Holdings Ltd.	Engages in supplying vehicle paints and associated products to vehicle body repairers.	-	-	-
3/11/2008	Shenzhen Wei Ning Da Industrial Co., Ltd. 3/11/2008 Robert Bosch GMBH	Offers automobile diagnostic tools, test systems, and instruments, as well as related software.	-	-	-
3/10/2008	K's Tire Service, Inc. 3/10/2008 Undisclosed	Provides automobile repair and tire distribution services.	-	-	-
3/7/2008	Decker Auto Supply 3/7/2008 Smith Auto Parts	Wholesaler of auto parts.	-	-	-
3/7/2008	AutoEquip 3/7/2008 Undisclosed	Offers complete car servicing.	-	-	-
3/7/2008	Rouen Lincoln Mercury 3/7/2008 Brondes Ford Maumee Ltd.	New and used car dealer offering service and parts.	-	-	-
3/4/2008	THB Zaima Group, Wiring Harness And Battery Cable Assemblies 3/4/2008 China Auto Electronics Grp Ltd. (SGX:T42)	Manufactures wiring harness and battery cable assemblies for motor vehicles.	\$ 18.1	-	-
3/4/2008	Moore-Davis Motors, Inc. 3/4/2008 Asbury Automotive Group Inc. (NYSE:ABG)	Provides new cars for rental, used vehicles for sale, and repair services.	-	-	-
3/4/2008	Parkside Land Rover 3/4/2008 Duckworth Land Rover	Offers new and used vehicles and accessories.	-	-	-

EV = Enterprise Value

LTM = Last 12 Months

Source: Capital IQ

First Quarter Automotive Aftermarket M&A Transactions (continued)

Announced / Closed	Target / Acquirer	Target Description	Implied EV (\$mm)	EV/LTM	
				Revenue	EBITDA
2/29/2008 2/29/2008	Bright Spark Precision Engineering Ltd. Merc Engineering UK Ltd.	Manufactures precision parts and tools for motorsport industry.	\$ 2.4	-	-
2/29/2008 2/29/2008	V.W. Kaiser Engineering, Inc. EnPro Industries, Inc. (NYSE:NPO)	Manufactures pins and bushings for the trucking industry.	-	-	-
2/28/2008 2/28/2008	Champion Parts, Inc., Certain Assets Cash Technologies, Inc. (AMEX:TQ)	Provides remanufactured automotive fuel system components.	\$ 3.2	-	-
2/26/2008 3/26/2008	Firma Oponiarska TC Debica SA (WSE:DBC) Goodyear Tire & Rubber Co. (NYSE:GT)	Offers passenger and light trucks tires primarily in Poland.	\$ 681.8	1.0x	13.0x
2/26/2008 2/26/2008	Oklahoma Truck Supply Inc. Fleetpride, Inc.	Engages in the distribution of truck parts.	-	-	-
2/25/2008 2/25/2008	Drivetrain Intermediary, LLC Sun Capital Partners, Inc.	Manufactures and distributes engineered friction and energy absorption components.	-	-	-
2/22/2008 2/22/2008	ATS Beteiligungs (Holding) GmbH Uniwheels Management (Switzerland) AG	Manufactures aluminium wheels for the automotive industry and for retail.	-	-	-
2/22/2008 2/22/2008	Bremstar AD Polska	Distributor of spare parts for cars and heavy trucks.	-	-	-
2/21/2008 2/21/2008	Indra SA Renault SA (ENXTPA:RNO), SITA, S.A.	Engages in the dismantling and recycling of end-of-life vehicles.	-	-	-
2/21/2008 Pending	Orient Engine, Inc. ATK Vege	Remanufacturer of import engines.	-	-	-
2/18/2008 Pending	Beck Imports of the Carolinas Sonic Automotive Inc. (NYSE:SAH)	Offers new and pre-owned vehicles and parts and accessories online.	-	-	-
2/18/2008 Pending	Tanimura Co., Ltd. Autobacs Seven Co. Ltd. (TSE:9832)	Retails automotive-related goods.	-	-	-
2/14/2008 2/14/2008	FRIEND 21 Co., Ltd. I.A Corp. (JASDAQ:7509)	Full-line automobile specialty shops.	\$ 14.8	0.1x	-
2/13/2008 2/13/2008	WM Rollings Ltd. LVW Senar Ltd.	Wholesaler of automotive parts and components.	\$ 3.9	-	-
2/11/2008 2/11/2008	AutoQual, Inc. and Drive N Style Driven Brands, Inc.	Specializes in the installation of interior and exterior restyling components.	-	-	-
2/11/2008 2/11/2008	Spray Nine Corporation Permatex, Inc.	Manufactures cleaning products for automotive and marine/recreational vehicle markets.	-	-	-
2/7/2008 2/7/2008	Pennsylvania Auto Dealers Exchange, Inc. ADESA Inc.	Provides automobile auction services in Pennsylvania.	-	-	-
2/5/2008 2/5/2008	Yancheng Zhongda International Trading Co., Ltd. Yancheng Aoshen Industry Equipment Manufacturing Co., Ltd	Engages in the sale of automobiles, chassis, automobile components, repair and maintenance equipment.	\$ 1.4	-	-
2/5/2008 3/5/2008	Surrey Panelcare Pty Ltd. Allomak, Ltd. (ASX:AMA)	Provides motor vehicle accident repair services.	-	-	-
2/5/2008 2/5/2008	OMP Racing S.r.l. MPS Venture SGR SpA, SAYE s.p.a., MFO Racing S.A.	Offers racing, tuning, karting, and sportswear products.	-	-	-
2/4/2008 2/4/2008	Nanjing Yuejin Automotive Brake System Co., Ltd. Brembo SpA (CM:BRE)	Manufactures automotive brake systems and components.	\$ 14.0	-	-
2/4/2008 Pending	Shell Autoserv (Thailand) Co., Ltd. Bridgestone Holdings (Thailand) Co., Ltd.	Operates a chain of auto maintenance stores.	-	-	-
2/4/2008 2/4/2008	Shell Malaysia Ltd., 8 Shell Autoserv Car Maintenance Stores Bridgestone Tyre Sales (Malaysia) Sdn. Bhd.	8 Shell Autoserv Car Maintenance Stores.	-	-	-
2/1/2008 2/1/2008	CSK Auto Corp. (NYSE:CAO) O'Reilly Automotive Inc. (NasdaqNM:ORLY)	Specialty retailer of automotive parts and accessories in the western United States.	\$1,031.0	0.6x	10.3x
2/1/2008 2/1/2008	CD-Design GmbH CCL Industries Inc. (TSX:CCL.B)	Manufactures printed and plastic coated films and aluminum parts for the automotive accessories industry.	\$ 14.5	0.6x	-
2/1/2008 2/1/2008	FLT France SAS FLT Polska sp. z o.o	Markets and distributes bearings, roller balls, and spark plugs.	\$ 2.1	-	-
2/1/2008 2/1/2008	Visteon Corp., Three Car Parts Manufacturing Plants Centrum Equities, Inc.	Aftermarket underhood and remanufacturing facilities.	-	-	-
2/1/2008 2/1/2008	True Test Engines ATK Vege	Remanufactures engines for American and Japanese vehicles.	-	-	-

EV = Enterprise Value

LTM = Last 12 Months

Source: Capital IQ

First Quarter Automotive Aftermarket M&A Transactions (continued)

Announced / Closed	Target / Acquirer	Target Description	Implied EV (\$mm)	EV/LTM	
				Revenue	EBITDA
1/31/2008	Global Motorsport Group, Inc. 1/31/2008 Dae-IL Corp. (KOSE:A092200)	Manufactures aftermarket parts and accessories for Harley-Davidson motorcycles.	\$ 16.0	0.1x	-
1/31/2008	Momentum Suria Sdn Bhd 3/31/2008 Wawasan TKH Sdn. Bhd.	Distributes automobiles, spare parts, and operates service workshops.	\$ 0.3	-	-
1/31/2008	Plastex S.A 1/31/2008 TCR Capital, Paris Orleans S.A. (ENXTPA:PAOR)	Manufactures and markets motorbike apparel and accessories.	-	-	-
1/31/2008	Parkside Towbars 1/31/2008 TriMas Corp. (NYSE:TRS)	Manufactures towbars and front protection equipment.	-	-	-
1/31/2008	Lysen Autolakering 1/31/2008 pierre.dk Autolakering A/S	Offers car painting services.	-	-	-
1/31/2008	SERVO Interconnect Limited 1/31/2008 Deutsch Ltd.	Distributor of autosport and industrial products.	-	-	-
1/29/2008	Seven Car Dealerships And Two Multi-Brand Repair Centres 1/29/2008 Grupo Marcos S.L.	Seven car dealerships and two multi-brand repair centers.	\$ 59.1	-	-
1/28/2008	DK-Schweizer (Thailand) Co., Ltd. 1/28/2008 DK Leather Corp. Bhd (KLSE:DKCORP)	Manufactures automotive leather upholstery.	\$ 0.1	-	-
1/28/2008	Alfrom Canada Corp. 1/28/2008 Genuine Parts Co. (NYSE:GPC)	Distributes import OEM car parts.	-	-	-
1/26/2008	Metpela Oy 1/26/2008 HUSS Umwelttechnik GmbH	Manufactures exhaust systems, pipe products, and catalytic converters.	-	-	-
1/25/2008	Rockford Products 1/25/2008 BlackEagle Partners	Manufacturer of chassis and suspension components.	-	-	-
1/25/2008	California Cylinder Heads 1/25/2008 ATK Vege	Manufacturer of cylinder heads.	-	-	-
1/24/2008	Tigar Tyres d.o.o. 1/24/2008 Compagnie Generale DES Etablissements Michelin SCA	Manufactures tires.	\$ 98.7	-	-
1/23/2008	Broad - Elm Auto Centers, Inc. 1/23/2008 Monro Muffler Brake Inc. (NasdaqNM:MNRO)	Provides automotive repair and tire service.	\$ 3.2	0.7x	-
1/23/2008	I & J Commercial Spray Centre Ltd. 1/23/2008 Alltruck Plc	Offers paint shop services for commercial vehicles.	-	-	-
1/22/2008	EV Parts, Inc. 2/4/2008 TechAlt Inc. (OTCPK:TCLT)	Operates as an online supplier of electric vehicles, parts, and accessories.	-	-	-
1/22/2008	MAHLE Mopisan Izmir A.S. and MAHLE Mopisan Konya A.S. 1/22/2008 Mahle GmbH	Manufactures engine components.	-	-	-
1/18/2008	Maryland Truck Parts 1/18/2008 Transaxle	Rebuilder and distributor of medium and heavy-duty truck drivetrains.	-	-	-
1/18/2008	KAMAZ Service Center 1/18/2008 Undisclosed	Assembles and services heavy-duty vehicles and cars.	-	-	-
1/16/2008	Anaerobicos S.A. 1/16/2008 ITW Permatex	Maker of adhesives and sealants for the automotive industry and other markets.	-	-	-
1/16/2008	American Motive Power, Inc. 1/16/2008 MISCOR Group Ltd. (OTCBB:MIGL)	Provides engine rebuilding, truck repair/rebuilding, and wreck repair.	\$ 10.9	1.8x	-
1/12/2008	Atlas Battery (KASE:ATBA) 1/12/2008 Shirazi Capital (Pvt.) Limited	Manufactures and sells polypropylene and hard rubber automotive batteries in Pakistan.	-	-	-
1/8/2008	Carefour, Car Wash Chain 1/8/2008 Hypromat France S.A.	Car Wash Chain of Carrefour.	-	-	-
1/8/2008	EN International Components AB 1/8/2008 Trailereffekter AB	Supplies spare parts for heavy commercial vehicles.	-	-	-
1/4/2008	Fox Factory, Inc. 1/4/2008 Compass Diversified Holdings (NasdaqNM:CODI)	Manufactures shock absorbers and racing suspension products.	\$ 85.0	-	7.5x
1/4/2008	Mace Security International, Inc., Car Wash in Bradenton, Florida 1/4/2008 Undisclosed	Offers car wash services.	\$ 1.3	-	-
1/4/2008	McCoy Corp., Real McCoy Service Centre 1/4/2008 James Western Star Sterling Ltd.	Offers brake service, alignments, frame straightening, axles and hydraulics for heavy-duty and some light-duty trucks.	-	-	-
1/4/2008	Flex Recubrimientos, Acabados Automotrices 1/4/2008 Sherwin-Williams Automotive Finishes Corp.	Car refinishing assets.	-	-	-
1/4/2008	Nelson International, Trailer Components Division 1/4/2008 Rockland Industrial Products, L.L.C.	Manufactures trailer liners, spacers, laminated truck flooring and scuff liners and apitong floors.	-	-	-

EV = Enterprise Value

LTM = Last 12 Months

Source: Capital IQ

Public Company Trading Multiples

(\$ in millions, except per share data)

Company Name	Stock Price	% of 52-Week High	Market Cap	Total Ent. Value	LTM		EV/LTM		P/LTM Diluted EPS ²	
					Revenue	EBITDA	Revenue	EBITDA ¹		
Manufacturers										
Aftermarket Technology Corp.	\$21.92	62.6%	\$ 465.5	\$ 446.2	\$ 529.0	\$ 81.8	0.8x	5.5x	12.7x	
Directed Electronics, Inc.	1.87	19.9%	47.6	309.8	401.1	55.8	0.8x	5.6x	NM	
Dorman Products, Inc.	9.38	62.5%	166.0	185.9	333.6	39.9	0.6x	4.7x	10.0x	
Proliance International, Inc.	0.95	29.1%	15.0	82.0	393.9	16.2	0.2x	5.1x	NM	
Standard Motor Products Inc.	8.40	50.3%	156.6	413.0	798.5	46.5	0.5x	8.5x	21.7x	
Tenneco Inc.	26.81	71.1%	1,249.4	2,585.4	6,344.0	482.0	0.4x	5.4x	NM	
							Average	0.6x	5.8x	14.8x
							Median	0.5x	5.4x	12.7x
Wholesalers/Distributors										
Genuine Parts Co.	\$44.78	86.6%	\$ 7,335.8	\$ 7,739.7	\$ 10,933.8	\$ 923.6	0.7x	8.4x	14.2x	
LKQ Corp.	21.90	87.6%	2,966.7	3,532.9	1,383.4	182.7	2.6x	19.3x	38.6x	
							Average	1.6x	13.9x	26.4x
							Median	1.6x	13.9x	26.4x
Retailers										
Advance Auto Parts Inc.	\$34.52	81.0%	\$ 3,272.7	\$ 3,947.3	\$ 4,844.4	\$ 563.7	0.8x	7.0x	15.2x	
AutoZone Inc.	126.83	90.4%	8,018.2	10,019.7	6,271.3	1,243.9	1.6x	8.1x	13.5x	
CSK Auto Corp.	11.81	61.7%	520.0	1,022.7	1,851.6	99.8	0.6x	10.3x	NM	
O'Reilly Automotive Inc.	28.79	75.2%	3,324.7	3,311.8	2,555.4	385.1	1.3x	8.6x	17.1x	
Pep Boys - Manny, Moe & Jack	9.11	40.5%	471.6	852.8	2,138.1	89.2	0.4x	9.6x	NM	
U.S. Auto Parts Network, Inc.	3.64	36.7%	108.6	67.7	161.0	10.1	0.4x	6.7x	NM	
							Average	0.8x	8.4x	15.3x
							Median	0.7x	8.3x	15.2x
Service Providers										
Midas Inc.	\$15.84	66.8%	\$ 219.1	\$ 325.9	\$ 183.5	\$ 43.6	1.8x	7.5x	17.7x	
Monro Muffler Brake Inc.	17.45	66.8%	322.1	420.7	439.9	61.3	1.0x	6.9x	15.6x	
							Average	1.4x	7.2x	16.7x
							Median	1.4x	7.2x	16.7x

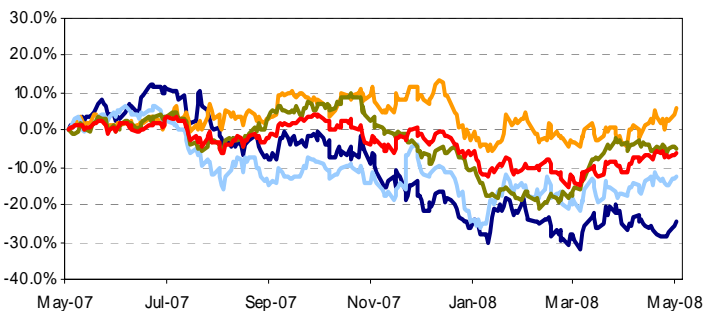
1) Excludes EV/EBITDA multiples greater than 25.0x

2) Excludes P/E multiples greater than 50.0x

NM = Not meaningful

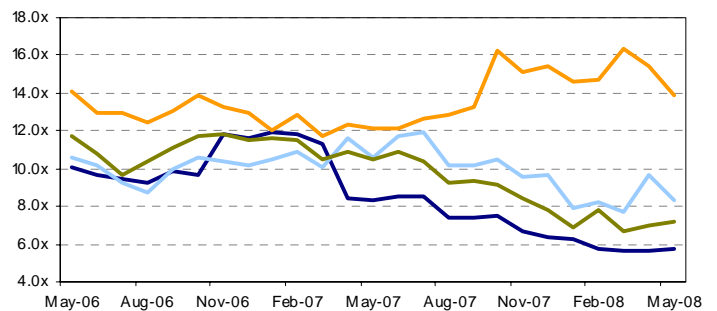
Source: Capital IQ as of May 15, 2008

Automotive Aftermarket Indexed Public Stock Performance by Segment



— Manufacturers
— Wholesalers/Distributors
— Retailers
— Service Providers
— S&P 500 Index

Automotive Aftermarket Enterprise Value-to-EBITDA Multiples by Segment



— Manufacturers
— Wholesalers/Distributors
— Retailers
— Service Providers



Automotive Aftermarket

Representative Transactions

WORLD CLASS WALL STREET EXPERTISE – BUILT FOR THE MIDDLE MARKET

The following transactions were closed by Capstone Partners or professionals currently employed at Capstone Partners.



Has been acquired by

FRIEND SKOLER & CO.



Has divested assets to

ROMEO RIM, INC.
THE RESERVE GROUP



Has been acquired by

LUND INTERNATIONAL, INC.



Has been acquired by

LAB SAFETY SUPPLY, INC.



Has been acquired by

LUVERNE TRUCK EQUIPMENT, INC.



Has been acquired by

DUBIN CLARK & COMPANY

About Capstone Partners LLC

Capstone Partners LLC is a leading national investment banking advisory firm dedicated to serving the transaction needs of middle-market companies. The firm provides corporate sale & divestiture, merger & acquisition and private placement advisory services across three major industry practices: Specialty Products, Business Services and Technology & Media. Our team possesses significant experience spanning hundreds of M&A and financing transactions. All of our transactions are supported through industry-specific research and relationship coverage capabilities.



Capstone Partners LLC

www.capstonellc.com